

page | pagina

## SECTION 0

**Introduction**

Products  
Declaration of Conformity  
The Company

0-1  
0-2  
0-3

**Introduzione**

Prodotti  
Dichiarazione di Conformità  
L'Azienda

## SEZIONE 0

## SECTION 1

**General Information**

Advice for Choosing a Switch  
Function of a Reed Proximity Switch  
Useful Hints in Installing Magnetic Switches  
Measuring Instruments

1-1  
1-9  
1-10  
1-12

**Informazioni Generali**

Suggerimenti per Scegliere un Interruttore  
Funzionamento di un Interruttore di Prossimità Reed  
Suggerimenti per Installare gli Interruttori Magnetici  
Strumenti di Misura

## SEZIONE 1

## SECTION 2

**Indexes**

Alphanumeric Index  
Visual Index  
Index by Schema

2-1  
2-3  
2-5

**Indici**

Indice Alfanumerico  
Indice Visuale  
Indice Schemi

## SEZIONE 2

## SECTION 3

**Switches Data Sheets**

How to Read the Catalogue  
Data Sheets

3-0  
3-...

**Schede Interruttori**

Come Leggere il Catalogo  
Schede

## SEZIONE 3

## SECTION 4

**Accessories**

Mounting Clamps  
Accessories  
Cables

4-1  
4-5  
4-6

**Accessori**

Staffe di Fissaggio  
Accessori  
Cavi

## SEZIONE 4

## alphanumeric index | indice alfanumerico

code codice	description descrizione	page pagina	code codice	description descrizione	page pagina	code codice	description descrizione	page pagina
F2000	FPB 400A60 N107	3-FPB	F2224	FFV 946S6T C145	3-FFV	F2708	FPC 419A3T N112	3-FPC
F2001	FPB 400A60 N107	3-FPB	F2225	FFV 100A00 N107	3-FFV	F2709	FPC F86E2T C145	3-FPC
F2002	FPB 418A6T N107	3-FPB	F2226	FFV 800C60 N107	3-FFV	F2710	FPC F87E2T C145	3-FPC
F2003	FPB F86E2T N112	3-FPB	F2227	FFV 115A3T N108	3-FFV	F2711	FPC F88E2M C145	3-FPC
F2004	FPB F87E2T N112	3-FPB	F2228	FFV 815C3T N108	3-FFV	F2712	FPC F89E2M C145	3-FPC
F2005	FPB F88E2M N112	3-FPB	F2230	FFV 946S6T N108	3-FFV	F2713	FPC F90E2M C145	3-FPC
F2006	FPB F89E2M N112	3-FPB	F2300	FGV 400A60 N107	3-FGV	F2714	FPC 419A3T C145	3-FPC
F2007	FPB F90E2M N112	3-FPB	F2302	FGV 406A6T N107	3-FGV	F2715	FPC F86E2T C144	3-FPC
F2008	FPB 419A3T N112	3-FPB	F2303	FGV 800C60 N107	3-FGV	F2716	FPC F87E2T C144	3-FPC
F2009	FPB F86E2T C145	3-FPB	F2305	FGV 806C6T N107	3-FGV	F2717	FPC F88E2M C144	3-FPC
F2010	FPB F87E2T C145	3-FPB	F2306	FGV F81E2T N112	3-FGV	F2718	FPC F89E2M C144	3-FPC
F2011	FPB F88E2M C145	3-FPB	F2307	FGV F82E2T N112	3-FGV	F2719	FPC F90E2M C144	3-FPC
F2012	FPB F89E2M C145	3-FPB	F2308	FGV 415A3T N112	3-FGV	F2720	FPC 419A3T C144	3-FPC
F2013	FPB F90E2M C145	3-FPB	F2309	FGV 815C3T N112	3-FGV	F2722	FPC 400A60 S131	3-FPC
F2014	FPB 419A3T C145	3-FPB	F2310	FGV F81E2T C145	3-FGV	F2733	FPC F86E2T N108	3-FPC
F2015	FPB F86E2T C144	3-FPB	F2311	FGV F82E2T C145	3-FGV	F2734	FPC F87E2T N108	3-FPC
F2016	FPB F87E2T C144	3-FPB	F2312	FGV 415A3T C145	3-FGV	F2735	FPC F88E2M N108	3-FPC
F2017	FPB F88E2M C144	3-FPB	F2313	FGV 815C3T C145	3-FGV	F2736	FPC F89E2M N108	3-FPC
F2018	FPB F89E2M C144	3-FPB	F2315	FGV 400A60 S131	3-FGV	F2737	FPC F90E2M N108	3-FPC
F2019	FPB F90E2M C144	3-FPB	F2318	FGV 800C60 S131	3-FGV	F2738	FPC 419A3T N108	3-FPC
F2020	FPB 419A3T C144	3-FPB	F2325	FGV 400A60 N107	3-FGV	F2800	FPF 400A60 N107	3-FPF
F2022	FPB 400A60 S131	3-FPB	F2326	FGV 800C60 N107	3-FGV	F2802	FPF 418A6T N107	3-FPF
F2023	FPB 800C60 N107	3-FPB	F2327	FGV 415A3T N108	3-FGV	F2803	FPF F86E2T N112	3-FPF
F2024	FPB 818C6T N107	3-FPB	F2328	FGV 815C3T N108	3-FGV	F2804	FPF F87E2T N112	3-FPF
F2025	FPB 819C3T N112	3-FPB	F2331	FGV F81E2T N108	3-FGV	F2805	FPF F88E2M N112	3-FPF
F2026	FPB 900S60 N112	3-FPB	F2332	FGV F82E2T N108	3-FGV	F2806	FPF F89E2M N112	3-FPF
F2027	FPB 819C3T C145	3-FPB	F2400	FLV 000A60 N107	3-FLV	F2807	FPF F90E2M N112	3-FPF
F2028	FPB 900S60 C145	3-FPB	F2401	FLV 003A2T N107	3-FLV	F2808	FPF 419A3T N112	3-FPF
F2029	FPB 819C3T C144	3-FPB	F2411	FLV 000A60 N111	3-FLV	F2809	FPF F86E2T C145	3-FPF
F2030	FPB 900S60 C144	3-FPB	F2412	FLV 003A2T N111	3-FLV	F2810	FPF F87E2T C145	3-FPF
F2032	FPB 800C60 S131	3-FPB	F2450	FMV 400A60 N107	3-FMV	F2811	FPF F88E2M C145	3-FPF
F2033	FPB F86E2T N108	3-FPB	F2451	FMV 403A2T N107	3-FMV	F2812	FPF F89E2M C145	3-FPF
F2034	FPB F87E2T N108	3-FPB	F2461	FMV 400A60 N111	3-FMV	F2813	FPF F90E2M C145	3-FPF
F2035	FPB F88E2M N108	3-FPB	F2462	FMV 403A2T N111	3-FMV	F2814	FPF 419A3T C145	3-FPF
F2036	FPB F89E2M N108	3-FPB	F2500	FNV 100A00 N107	3-FNV	F2815	FPF F86E2T C144	3-FPF
F2037	FPB F90E2M N108	3-FPB	F2501	FNV 103A2T N107	3-FNV	F2816	FPF F87E2T C144	3-FPF
F2038	FPB 419A3T N108	3-FPB	F2504	FNV 100A00 S131	3-FNV	F2817	FPF F88E2M C144	3-FPF
F2039	FPB 819C3T N108	3-FPB	F2511	FNV 100A00 N111	3-FNV	F2818	FPF F89E2M C144	3-FPF
F2040	FPB 900S60 N108	3-FPB	F2512	FNV 103A2T N111	3-FNV	F2819	FPF F90E2M C144	3-FPF
F2041	FPB F86E2T N112	3-FPB	F2600	FPA 400A60 N107	3-FPA	F2820	FPF 419A3T C144	3-FPF
F2043	FPB 800C60 N107	3-FPB	F2601	FPA 400A60 N107	3-FPA	F2821	FPF 400A60 S131	3-FPF
F2091	FBV 100A00 N107	3-FBV	F2602	FPA 418A6T N107	3-FPA	F2823	FPF 418A6T S131	3-FPF
F2092	FBV 110A0T N107	3-FBV	F2603	FPA F86E2T N112	3-FPA	F2833	FPF F86E2T N108	3-FPF
F2093	FBV 700C00 N107	3-FBV	F2604	FPA F87E2T N112	3-FPA	F2834	FPF F87E2T N108	3-FPF
F2094	FBV 710C0T N107	3-FBV	F2605	FPA F88E2M N112	3-FPA	F2835	FPF F88E2M N108	3-FPF
F2095	FBV 810C6T N107	3-FBV	F2606	FPA F89E2M N112	3-FPA	F2836	FPF F89E2M N108	3-FPF
F2100	FEK 100A00 N107	3-FEK	F2607	FPA F90E2M N112	3-FPA	F2837	FPF F90E2M N108	3-FPF
F2101	FEK 101A00 N107	3-FEK	F2608	FPA 419A3T N112	3-FPA	F2838	FPF 419A3T N108	3-FPF
F2102	FEK 110A0T N107	3-FEK	F2609	FPA F86E2T C145	3-FPA	F2900	FPH 400A60 N107	3-FPH
F2103	FEK 700C00 N107	3-FEK	F2610	FPA F87E2T C145	3-FPA	F2901	FPH 400A60 N107	3-FPH
F2104	FEK 801C60 N107	3-FEK	F2611	FPA F88E2M C145	3-FPA	F2902	FPH 418A6T N107	3-FPH
F2105	FEK 810C6T N107	3-FEK	F2612	FPA F89E2M C145	3-FPA	F2903	FPH F86E2T N112	3-FPH
F2115	FEK 100A00 S131	3-FEK	F2613	FPA F90E2M C145	3-FPA	F2904	FPH F87E2T N112	3-FPH
F2118	FEK 800C60 S131	3-FEK	F2614	FPA 419A3T C145	3-FPA	F2905	FPH F88E2M N112	3-FPH
F2125	FEK 100A00 N107	3-FEK	F2615	FPA F86E2T C144	3-FPA	F2906	FPH F89E2M N112	3-FPH
F2141	FEK 100A00 N111	3-FEK	F2616	FPA F87E2T C144	3-FPA	F2907	FPH F90E2M N112	3-FPH
F2142	FEK 101A00 N111	3-FEK	F2617	FPA F88E2M C144	3-FPA	F2908	FPH 419A3T N112	3-FPH
F2143	FEK 110A0T N111	3-FEK	F2618	FPA F89E2M C144	3-FPA	F2909	FPH F86E2T C145	3-FPH
F2144	FEK 700C00 N111	3-FEK	F2619	FPA F90E2M C144	3-FPA	F2910	FPH F87E2T C145	3-FPH
F2145	FEK 801C60 N111	3-FEK	F2620	FPA 419A3T C144	3-FPA	F2911	FPH F88E2M C145	3-FPH
F2146	FEK 810C6T N111	3-FEK	F2622	FPA 400A60 S131	3-FPA	F2912	FPH F89E2M C145	3-FPH
F2200	FFV 100A00 N107	3-FFV	F2633	FPA F86E2T N108	3-FPA	F2913	FPH F90E2M C145	3-FPH
F2201	FFV 101A00 N107	3-FFV	F2634	FPA F87E2T N108	3-FPA	F2914	FPH 419A3T C145	3-FPH
F2202	FFV 110A0T N107	3-FFV	F2635	FPA F88E2M N108	3-FPA	F2915	FPH F86E2T C144	3-FPH
F2203	FFV 700C00 N107	3-FFV	F2636	FPA F89E2M N108	3-FPA	F2916	FPH F87E2T C144	3-FPH
F2205	FFV 810C6T N107	3-FFV	F2637	FPA F90E2M N108	3-FPA	F2917	FPH F88E2M C144	3-FPH
F2208	FFV 115A3T N112	3-FFV	F2638	FPA 419A3T N108	3-FPA	F2918	FPH F89E2M C144	3-FPH
F2209	FFV 815C3T N112	3-FFV	F2700	FPC 400A60 N107	3-FPC	F2919	FPH F90E2M C144	3-FPH
F2212	FFV 115A3T C145	3-FFV	F2701	FPC 400A60 N107	3-FPC	F2920	FPH 419A3T C144	3-FPH
F2213	FFV 815C3T C145	3-FFV	F2702	FPC 418A6T N107	3-FPC	F2922	FPH 400A60 S131	3-FPH
F2215	FFV 100A00 S131	3-FFV	F2703	FPC F86E2T N112	3-FPC	F2933	FPH F86E2T N108	3-FPH
F2218	FFV 800C60 S131	3-FFV	F2704	FPC F87E2T N112	3-FPC	F2934	FPH F87E2T N108	3-FPH
F2221	FFV 900S60 N112	3-FFV	F2705	FPC F88E2M N112	3-FPC	F2935	FPH F88E2M N108	3-FPH
F2222	FFV 946S6T N112	3-FFV	F2706	FPC F89E2M N112	3-FPC	F2936	FPH F89E2M N108	3-FPH
F2223	FFV 900S60 C145	3-FFV	F2707	FPC F90E2M N112	3-FPC	F2937	FPH F90E2M N108	3-FPH

code codice	description descrizione	page pagina	code codice	description descrizione	page pagina	code codice	description descrizione	page pagina
F2938	FPH 419A3T N108	3-FPH	F3218	FPM F89E2M C144	3-FPM	F3706	FTV F83E2T N112	3-FTV
F2941	FPH F86E2T N112	3-FPH	F3219	FPM F90E2M C144	3-FPM	F3707	FTV F86E2T N112	3-FTV
F3000	FPI 400A60 N107	3-FPI	F3220	FPM 419A3T C144	3-FPM	F3708	FTV 415A3T N112	3-FTV
F3001	FPI 400A60 N107	3-FPI	F3221	FPM 400A60 S131	3-FPM	F3709	FTV 815C3T N112	3-FTV
F3002	FPI 418A6T N107	3-FPI	F3223	FPM 418A6T S131	3-FPM	F3710	FTV F83E2T C145	3-FTV
F3003	FPI F86E2T N112	3-FPI	F3233	FPM F86E2T N108	3-FPM	F3711	FTV F86E2T C145	3-FTV
F3004	FPI F87E2T N112	3-FPI	F3234	FPM F87E2T N108	3-FPM	F3712	FTV 415A3T C145	3-FTV
F3005	FPI F88E2M N112	3-FPI	F3235	FPM F88E2M N108	3-FPM	F3713	FTV 815C3T C145	3-FTV
F3006	FPI F89E2M N112	3-FPI	F3236	FPM F89E2M N108	3-FPM	F3714	FTV 400A60 S131	3-FTV
F3007	FPI F90E2M N112	3-FPI	F3237	FPM F90E2M N108	3-FPM	F3716	FTV 406A4T S131	3-FTV
F3008	FPI 419A3T N112	3-FPI	F3238	FPM 419A3T N108	3-FPM	F3717	FTV 800C60 S131	3-FTV
F3009	FPI F86E2T C145	3-FPI	F3300	FPV 400A60 N107	3-FPV	F3719	FTV 806C6T S131	3-FTV
F3010	FPI F87E2T C145	3-FPI	F3301	FPV 400A60 N107	3-FPV	F3727	FTV 415A3T N108	3-FTV
F3011	FPI F88E2M C145	3-FPI	F3302	FPV 418A6T N107	3-FPV	F3728	FTV 815C3T N108	3-FTV
F3012	FPI F89E2M C145	3-FPI	F3303	FPV F86E2T N112	3-FPV	F3731	FTV F83E2T N108	3-FTV
F3013	FPI F90E2M C145	3-FPI	F3304	FPV F87E2T N112	3-FPV	F3732	FTV F86E2T N108	3-FTV
F3014	FPI 419A3T C145	3-FPI	F3305	FPV F88E2M N112	3-FPV	F3741	FTV F86E2T N112	3-FTV
F3015	FPI F86E2T C144	3-FPI	F3306	FPV F89E2M N112	3-FPV	F3742	FTV 406A6T N107	3-FTV
F3016	FPI F87E2T C144	3-FPI	F3307	FPV F90E2M N112	3-FPV	F3800	FFA 100A00 N107	3-FFA
F3017	FPI F88E2M C144	3-FPI	F3308	FPV 419A3T N112	3-FPV	F3801	FFA 101A00 N107	3-FFA
F3018	FPI F89E2M C144	3-FPI	F3309	FPV F86E2T C145	3-FPV	F3802	FFA 110A0T N107	3-FFA
F3019	FPI F90E2M C144	3-FPI	F3310	FPV F87E2T C145	3-FPV	F3803	FFA 700C00 N107	3-FFA
F3020	FPI 419A3T C144	3-FPI	F3311	FPV F88E2M C145	3-FPV	F3805	FFA 810C6T N107	3-FFA
F3022	FPI 400A60 S131	3-FPI	F3312	FPV F89E2M C145	3-FPV	F3808	FFA 115A3T N112	3-FFA
F3033	FPI F86E2T N108	3-FPI	F3313	FPV F90E2M C145	3-FPV	F3809	FFA 815C3T N112	3-FFA
F3034	FPI F87E2T N108	3-FPI	F3314	FPV 419A3T C145	3-FPV	F3812	FFA 115A3T C145	3-FFA
F3035	FPI F88E2M N108	3-FPI	F3315	FPV F86E2T C144	3-FPV	F3813	FFA 815C3T C145	3-FFA
F3036	FPI F89E2M N108	3-FPI	F3316	FPV F87E2T C144	3-FPV	F3815	FFA 100A00 S131	3-FFA
F3037	FPI F90E2M N108	3-FPI	F3317	FPV F88E2M C144	3-FPV	F3818	FFA 800C60 S131	3-FFA
F3038	FPI 419A3T N108	3-FPI	F3318	FPV F89E2M C144	3-FPV	F3825	FFA 100A00 N107	3-FFA
F3100	FPL 400A60 N107	3-FPL	F3319	FPV F90E2M C144	3-FPV	F3827	FFA 115A3T N108	3-FFA
F3102	FPL 418A6T N107	3-FPL	F3320	FPV 419A3T C144	3-FPV	F3828	FFA 815C3T N108	3-FFA
F3103	FPL F86E2T N112	3-FPL	F3322	FPV 400A60 S131	3-FPV	F3830	FFA 946S6T N108	3-FFA
F3104	FPL F87E2T N112	3-FPL	F3323	FPV 800C60 N107	3-FPV	FA01	clamp / staffa	4-1
F3105	FPL F88E2M N112	3-FPL	F3324	FPV 818C6T N107	3-FPV	FA02	clamp / staffa	4-1
F3106	FPL F89E2M N112	3-FPL	F3325	FPV 819C3T N112	3-FPV	FA11	clamp / staffa	4-1
F3107	FPL F90E2M N112	3-FPL	F3326	FPV 900S60 N112	3-FPV	FA21	clamp / staffa	4-1
F3108	FPL 419A3T N112	3-FPL	F3327	FPV 819C3T C145	3-FPV	FA23	clamp / staffa	4-1
F3109	FPL F86E2T C145	3-FPL	F3328	FPV 900S60 C145	3-FPV	FA25	clamp / staffa	4-1
F3110	FPL F87E2T C145	3-FPL	F3329	FPV 819C3T C144	3-FPV	FA26	clamp / staffa	4-1
F3111	FPL F88E2M C145	3-FPL	F3330	FPV 900S60 C144	3-FPV	FA43	clamp / staffa	4-2
F3112	FPL F89E2M C145	3-FPL	F3332	FPV 800C60 S131	3-FPV	FA44	clamp / staffa	4-2
F3113	FPL F90E2M C145	3-FPL	F3333	FPV F86E2T N108	3-FPV	FA45	clamp / staffa	4-2
F3114	FPL 419A3T C145	3-FPL	F3334	FPV F87E2T N108	3-FPV	FA46	clamp / staffa	4-2
F3115	FPL F86E2T C144	3-FPL	F3335	FPV F88E2M N108	3-FPV	FA49	clamp / staffa	4-3
F3116	FPL F87E2T C144	3-FPL	F3336	FPV F89E2M N108	3-FPV	FA50	clamp / staffa	4-3
F3117	FPL F88E2M C144	3-FPL	F3337	FPV F90E2M N108	3-FPV	FA52	clamp / staffa	4-3
F3118	FPL F89E2M C144	3-FPL	F3338	FPV 419A3T N108	3-FPV	FA53	clamp / staffa	4-3
F3119	FPL F90E2M C144	3-FPL	F3339	FPV 819C3T N108	3-FPV	FA54	clamp / staffa	4-4
F3120	FPL 419A3T C144	3-FPL	F3340	FPV 900S60 N108	3-FPV	FA55	clamp / staffa	4-4
F3121	FPL 400A60 S131	3-FPL	F3341	FPV F86E2T N112	3-FPV	FA56	clamp / staffa	4-4
F3123	FPL 418A6T S131	3-FPL	F3343	FPV 800C60 N107	3-FPV	FA60	clamp / staffa	4-4
F3133	FPL F86E2T N108	3-FPL	F3344	FPV 318A0T N107	3-FPV	FA61	clamp / staffa	4-4
F3134	FPL F87E2T N108	3-FPL	F3400	FSA 000A60 C167	3-FSA	1248	protection/protezione	4-5
F3135	FPL F88E2M N108	3-FPL	F3401	FSA 000A60 C167	3-FSA	1408-230	marking sleeve/tubetto	4-5
F3136	FPL F89E2M N108	3-FPL	F3402	FSA 018A6T C167	3-FSA	1727	big cable clamp/ fermacavo grande	4-5
F3137	FPL F90E2M N108	3-FPL	F3403	FSA F86E2T C165	3-FSA			
F3138	FPL 419A3T N108	3-FPL	F3404	FSA F87E2T C165	3-FSA	1728	small cable clamp/ fermacavo piccolo	4-5
F3200	FPM 400A60 N107	3-FPM	F3405	FSA F88E2M C165	3-FSA			
F3202	FPM 418A6T N107	3-FPM	F3406	FSA F89E2M C165	3-FSA	****	cables/cavi	4-6
F3203	FPM F86E2T N112	3-FPM	F3407	FSA F90E2M C165	3-FSA			
F3204	FPM F87E2T N112	3-FPM	F3408	FSA 019A3T C165	3-FSA			
F3205	FPM F88E2M N112	3-FPM	F3600	FSV 000A60 C167	3-FSV			
F3206	FPM F89E2M N112	3-FPM	F3601	FSV 000A60 C167	3-FSV			
F3207	FPM F90E2M N112	3-FPM	F3602	FSV 018A6T C167	3-FSV			
F3208	FPM 419A3T N112	3-FPM	F3603	FSV F86E2T C165	3-FSV			
F3209	FPM F86E2T C145	3-FPM	F3604	FSV F87E2T C165	3-FSV			
F3210	FPM F87E2T C145	3-FPM	F3605	FSV F88E2M C165	3-FSV			
F3211	FPM F88E2M C145	3-FPM	F3606	FSV F89E2M C165	3-FSV			
F3212	FPM F89E2M C145	3-FPM	F3607	FSV F90E2M C165	3-FSV			
F3213	FPM F90E2M C145	3-FPM	F3608	FSV 019A3T C165	3-FSV			
F3214	FPM 419A3T C145	3-FPM	F3700	FTV 400A60 N107	3-FTV			
F3215	FPM F86E2T C144	3-FPM	F3702	FTV 406A4T N107	3-FTV			
F3216	FPM F87E2T C144	3-FPM	F3703	FTV 800C60 N107	3-FTV			
F3217	FPM F88E2M C144	3-FPM	F3705	FTV 806C6T N107	3-FTV			

visual index | indice visuale



switch style forma interruttore	FPH	FPA	FPL	FPV	FPC	FPF	FPB	FPI	FPM	FSV	FSA
available circuits circuiti disponibili	☺	☺	-	☺	☺	-	☺	☺	-	-	-
reed		☺	☺	☺	☺	☺	☺	☺	☺	☺	☺
		-	-	-	☺	-	☺	-	-	-	-
		-	-	-	☺	-	☺	-	-	-	-
no led	☺	☺	☺	☺	☺	☺	☺	☺	☺	☺	☺
1 led	☺	☺	☺	☺	☺	☺	☺	☺	☺	☺	☺
overcurrent extra corrente	☺	☺	☺	☺	☺	☺	☺	☺	☺	☺	☺
overvoltage extra tensione	-	-	-	-	-	-	-	-	-	-	-
electronic		☺	☺	☺	☺	☺	☺	☺	☺	☺	☺
		☺	☺	☺	☺	☺	☺	☺	☺	☺	☺
	with timer con timer	-	-	-	-	-	-	-	-	-	-
1 led	☺	☺	☺	☺	☺	☺	☺	☺	☺	☺	☺
2 led	☺	☺	☺	☺	☺	☺	☺	☺	☺	☺	☺
overcurrent extra corrente	☺	☺	☺	☺	☺	☺	☺	☺	☺	☺	☺
polarity reversal inversione polarità	☺	☺	☺	☺	☺	☺	☺	☺	☺	☺	☺
short circuit corto circuito	☺	☺	☺	☺	☺	☺	☺	☺	☺	☺	☺

other data  
altri dati

dimensions LxWxH dimensioni LxLxA [mm]	30x5x7	24x5x7	28x5x7	28x6x7	23x6x7	27x6x7	25x11x7	18x13x7	22x13x7	25x3x5	23x3x5
temperature -20 +70 [C°] temperatura -20 +120 [C°]	☺	☺	☺	☺	☺	☺	☺	☺	☺	☺	☺
housing material materiale custodia	PA	PA	PA	PA	PA	PA	PA	PA	PA	PA	PA
degree grado	68-65	68-65	67	68-65	68-65	67	68-65	68-65	67	68-65	68-65
explosion esplosione (atex)	☺	-	-	☺	-	-	☺	-	-	-	-

electrical connection output  
uscita connessione elettrica

cable cavo	☺	☺	-	☺	☺	-	☺	☺	-	☺	☺
plug connettore	-	-	☺	-	-	☺	-	-	☺	-	-
in-line orizzontale	☺	-	-	☺	-	-	☺	-	-	☺	-
inclined 40° inclinato 40°	-	☺	-	-	☺	-	-	☺	-	-	☺
vertical verticale	-	-	☺	-	-	☺	-	-	☺	-	-

mounting  
montaggio

top dall'alto	☺	☺	☺	-	-	-	-	-	-	☺	☺
side laterale	-	-	-	☺	☺	☺	-	-	-	-	-
with screw con vite	-	-	-	-	-	-	☺	☺	☺	-	-
without clamp senza staffa	☺	☺	☺	☺	☺	☺	☺	-	-	☺	☺
with clamp con staffa	☺	☺	☺	☺	☺	☺	-	-	-	-	-

page pagina	3-FPH	3-FPA	3-FPL	3-FPV	3-FPC	3-FPF	3-FPB	3-FPI	3-FPM	3-FSV	3-FSA
----------------	-------	-------	-------	-------	-------	-------	-------	-------	-------	-------	-------


 switch style  
 forma interruttore

**FEK    FFV    FFA    FGV    FBV    FTV    FLV    FMV    FNV**

 available circuits  
 circuiti disponibili

		FEK	FFV	FFA	FGV	FBV	FTV	FLV	FMV	FNV
<b>reed</b>		☺	☺	☺	☺	☺	☺	☺	☺	☺
		☺	☺	☺	☺	☺	☺	-	-	-
		-	☺	☺	-	-	-	-	-	-
	no led	☺	☺	☺	☺	☺	-	☺	☺	☺
	1 led	☺	☺	☺	☺	☺	☺	☺	☺	☺
<b>protection</b>	overcurrent extra corrente	-	-	-	-	-	-	-	-	-
	overvoltage extra tensione	☺	☺	☺	-	☺	-	-	-	-
<b>electronic</b>		-	-	-	☺	-	☺	-	-	-
		-	-	-	-	-	-	-	-	-
	with timer con timer	-	-	-	-	-	☺	-	-	-
	1 led	-	-	-	☺	-	☺	-	-	-
	2 led	-	-	-	-	-	-	-	-	-
<b>protection</b>	overcurrent extra corrente	-	-	-	-	-	☺	-	-	-
	polarity reversal inversione polarità	-	-	-	-	-	☺	-	-	-
	short circuit corto circuito	-	-	-	-	-	☺	-	-	-

 other data  
 altri dati

		FEK	FFV	FFA	FGV	FBV	FTV	FLV	FMV	FNV
<b>dimensions</b>	LxWxH dimensioni LxLxA [mm]	33x13x8	38x13x8	38x11x8	28x13x8	33x15x22	22x9x16	19x04	36x06	37x08
	temperature -20 +70 [C°] temperatura -20 +120 [C°]	☺	☺	☺	☺	☺	☺	☺	☺	☺
<b>protection</b>	housing material materiale custodia	PA/PP	PA	PA	PA	PA	ZA4	AISI304	AISI304	PA
	degree grado IP	65	67	67	67	67	67	67	67	67
	explosion esplosione (atex)	-	-	-	-	-	☺	-	-	-

 electrical connection output  
 uscita connessione elettrica

		FEK	FFV	FFA	FGV	FBV	FTV	FLV	FMV	FNV
<b>electrical connection output</b>	cable cavo	-	☺	☺	☺	☺	☺	☺	☺	☺
	plug connettore	☺	-	-	-	-	-	-	-	-
	in-line orizzontale	☺	☺	☺	☺	☺	☺	☺	☺	☺
	inclined 40° inclinato 40°	-	-	-	-	-	-	-	-	-
	vertical verticale	-	-	-	-	-	-	-	-	-

 mounting  
 montaggio

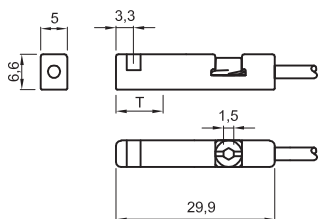
		FEK	FFV	FFA	FGV	FBV	FTV	FLV	FMV	FNV
<b>mounting</b>	top dall'alto	☺	☺	☺	☺	☺	☺	-	-	-
	side laterale	-	-	-	-	-	-	-	-	-
	with screw con vite	-	-	-	-	☺	☺	-	-	-
	without clamp senza staffa	-	-	-	-	-	-	☺	☺	☺
	with clamp con staffa	☺	☺	☺	☺	☺	☺	-	-	-

 page  
 pagina

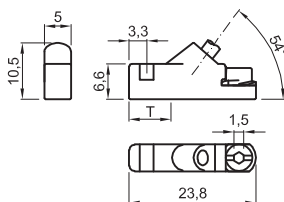
**3-FEK    3-FFV    3-FFA    3-FGV    3-FBV    3-FTV    3-FLV    3-FMV    3-FNV**

index by schema | indice schemi

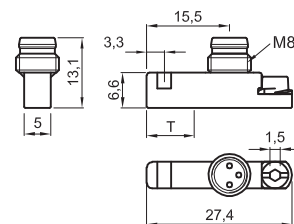
### FPH



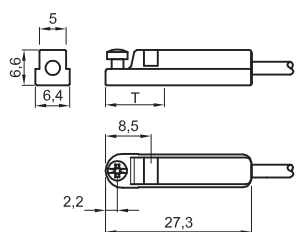
### FPA



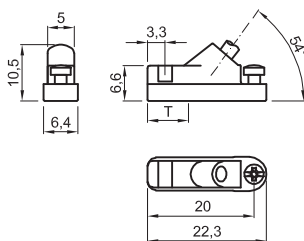
### FPL



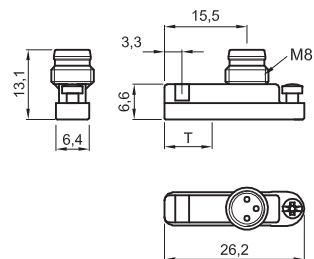
### FPV



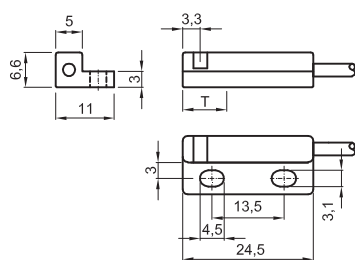
### FPC



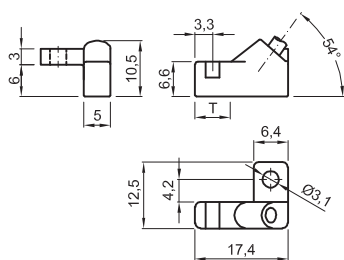
### FPF



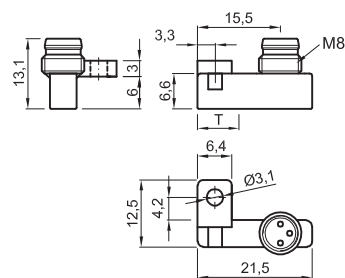
### FPB



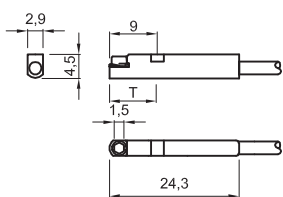
### FPI



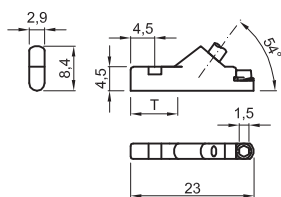
### FPM



### FSV



### FSA

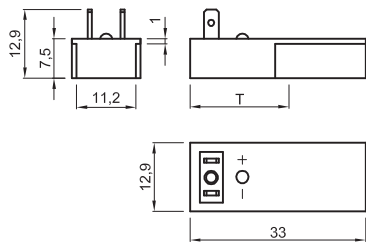


note | nota

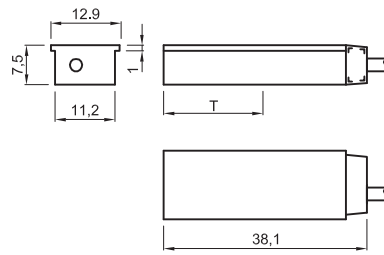
see section 3 for data sheets  
see section 4 for accessories

vedere sezione 3 per schede prodotto  
vedere sezione 4 per accessori

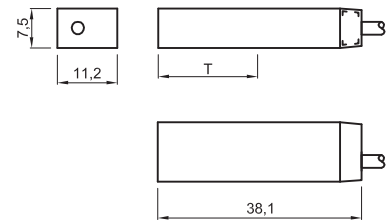
**FEK**



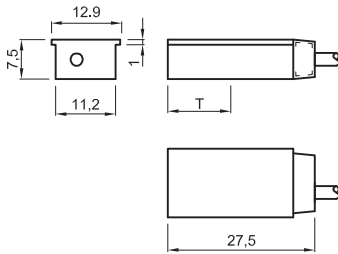
**FFV**



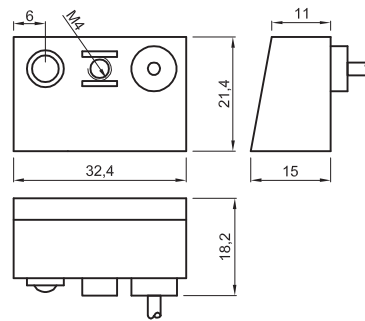
**FFA**



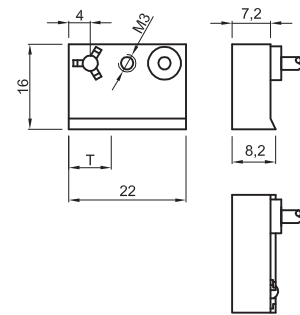
**FGV**



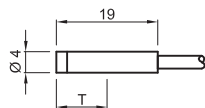
**FBV**



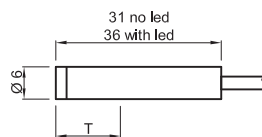
**FTV**



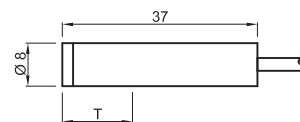
**FLV**



**FMV**



**FNV**



note | nota

see section 3 for data sheets  
see section 4 for accessories

vedere sezione 3 per schede prodotto  
vedere sezione 4 per accessori